



## Oplevelser året rundt Experiences all year round

### Ribe & Nationalpark Vadehavet

Danmarks ældste by blev grundlagt i vikingetiden. Byen har en velbevaret middelalderlig bykerne omkring den smukke Domkirke. Vadehavsområdet byder på enestående natur, skønne strande og et rigt dyreliv med millioner af trækfugle.

### Spændende oplevelser venter

- Museet Ribes Vikinger, Ribe VikingCenter, Kunstmuseum, Domkirke, Heksemuseum, Jacob A. Riis Museum, Marsk Tower mm.
- Mere end 100 fredede huse.
- Nationalpark Vadehavet, Vadehavscentret, Sort Sol og østers.
- Rabat til attraktioner og svømmebad.
- LEGOLAND & LEGO House 55 km.

### Events hele året

Vikingemarked, Tulipanfest, By Night, Dyrskue, Jazz Festival, Vinfestival, Rued Langgaard Festival, Høstmarked, Sort Sol ture, Østersture, Kulturnat, Peters Jul i Ribe

### Ribe & Wadden Sea National Park

Denmark's oldest city was founded in the Viking Age. The city has a well-preserved medieval town center around the beautiful Cathedral. The Wadden Sea area offers unique nature, beautiful beaches and a rich wildlife with millions of migratory birds.

### Exciting experiences await

- Ribe Viking Museum, Ribe Viking Center, Art Museum, Cathedral, Witch Museum, Jacob A. Riis Museum, Marsk Tower.
- Beautiful town center with more than 100 listed houses.
- Wadden Sea National Park, Wadden Sea Center, "Black Sun" and oysters.
- Discount on attractions and swimming bath.
- LEGOLAND & LEGO House 55 km.

### Events all year around

Vikingmarket, Tulip Festival, By Night, Cattle Show, Jazz festival, Wine festival, Rued Langgaard festival, Harvest festival, Culture Night, "Black Sun" tours, Oyster tours, Culture night, Christmas market.



Loved By Guests Award,  
Hotels.com



Guest Review Award,  
Booking.com



Travellers Choice Winner,  
Tripadvisor



Travellers Favourite,  
Kayak



## Ribe Byferie Resort



Damvej 34, 6760 Ribe  
Tlf. +45 79 88 79 88. E-mail: [info@ribe-byferie.dk](mailto:info@ribe-byferie.dk)  
[www.ribe-byferie.dk](http://www.ribe-byferie.dk)





# Ribe Byferie Resort

## Ferielejligheder Holiday apartments

Feriecentret ligger som "en by i byen", i gåafstand til Ribes middelalderlige bykerne med butikker, restauranter og seværdigheder. Der værnes om en høj standard ude såvel som inde.

### Faciliteter og aktiviteter

- Café med gratis varme drikke, også to-go.
- Legerum med PC spil, bordtennis, bordfodbold, spil og bibliotek.
- Sauna, spa og solarium.
- Vikingelegeplads, trampoliner, petanque, basketball, fodbold og gadeskak.
- Udlejning af kanoer, klapvogne, trækvogne, cykler, børnecykler, elcykler, ladycykel og løbehjul.
- Fælleshus med køkken og plads til 32 personer.
- Grillhytte med 4 alm. grill, 1 kuglegrill og udekøken. Bålplads. Gratis kul og træ.
- Gratis parkeringsområde og ladestander til elbiler

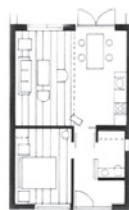
The holiday center is located as "a town within the town", within walking distance to Ribe's medieval town center with shops, restaurants and sights. A high standard is maintained outside as well as inside.

### Facilities and activities

- Café with free hot drinks, also to-go.
- Playroom with PC games, table tennis, table football, games and library.
- Sauna, spa and solarium.
- Viking playground, trampolines, petanque, basketball, football and street chess.
- Rental of canoes, pushchairs, trailers, bicycles, children's bicycles, electric bicycles, cargo bike and scooters.
- Communal house with kitchen and room for 32 people.
- Large barbeque pavilion with 4 grill, 1 ball grill and outdoor kitchen. Campfire site. Free coal and wood.
- Free parking facilities and charging stands for electric cars.



**Praktiske oplysninger og priser / Practical information and prices**  
[www.ribe-byferie.dk](http://www.ribe-byferie.dk)

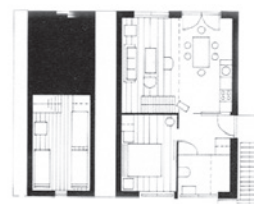


A1

### A1: 1-4 pers. 54 m<sup>2</sup>

Stueplan. Entré, køkken, stue med sovesofa, badeværelse, soveværelse med dobbeltseng. Gårdhave.

Ground floor. Entrance hall, kitchen, living room with sofa bed, bathroom, bedroom with double bed. Courtyard.



A2

### A2: 5-7 pers. 68 m<sup>2</sup>

1. sal, indrettet i to plan. Entré, køkken, stue med sovesofa, badeværelse, soveværelse med dobbeltseng. Altan.  
1. plan: Værelse med 3 enkeltsenge i åben forbindelse til stuen.

1st floor, two level apartment. Entrance hall, kitchen, living room with sofa bed, bathroom, bedroom with double bed. Balcony. 1st level: room with 3 beds in open connection to the living room.



A

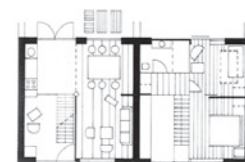
### A: 5-7 pers. 68 m<sup>2</sup>

Stueplan, indrettet i to plan. Entré, køkken, stue med sovesofa, badeværelse, soveværelse med dobbeltseng. Gårdhave.

1. plan: Værelse med 3 enkeltsenge, i åben forbindelse til stuen.

Ground floor, two level apartment. Entrance hall, kitchen, living room with sofa bed, bathroom, bedroom with double bed. Courtyard.

1st level: room with 3 beds in open connection to the living room.



C

### C: 4-6 pers. 68

Stueplan + 1. sal. Entré, køkken, stue med sovesofa. Gårdhave.  
På 1. sal: Badeværelse, soveværelse med dobbeltseng, værelse med køje-seng.

Ground floor + 1st floor. Entrance hall, kitchen, living room with sofa bed, bathroom. Courtyard.  
1st floor: bathroom, bedroom with double bed, room with bunk beds.



En del af lejlighederne er indrettet med særlige hensyn til handicappede.

Some of our apartments are specially equipped for disabled guests.

ALLERGY

En del af lejlighederne er indrettet med særlige hensyn til allergikere.

Some of our apartments are specially equipped for guests with allergies.



Hunde er tilladt i en del af boligerne. Skal anmeldes for ankomst.

Dogs are allowed in some of the apartments. Please notify in advance if you're bringing a dog.